



Access the Enterprise Data Warehouse (EDW) with AWS Athena

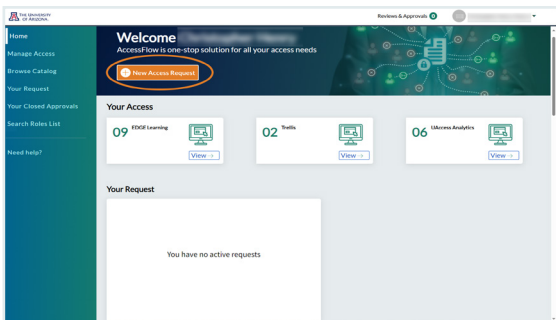


UAIR provides direct access to the EDW via the Athena service in the AWS console. Athena has replaced using SQL Developer in an AWS workspace to query the EDW. Follow along with the steps below to request access and start querying university data.

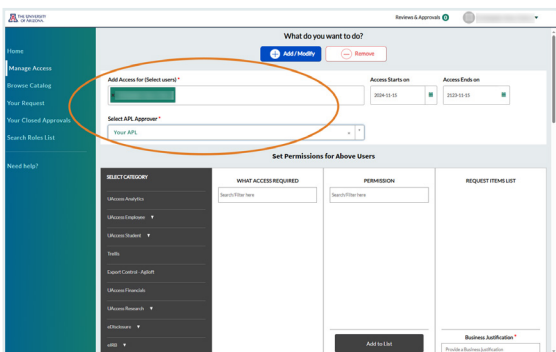
Gaining Access

Before you can access the EDW, you must submit a request via AccessFlow. UAIR will verify the need and security requirements before setting up your access. Start by logging into [AccessFlow](#) with your Net ID.

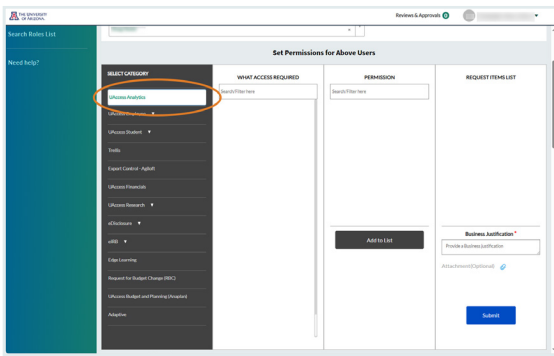
1. Select New Access Request.



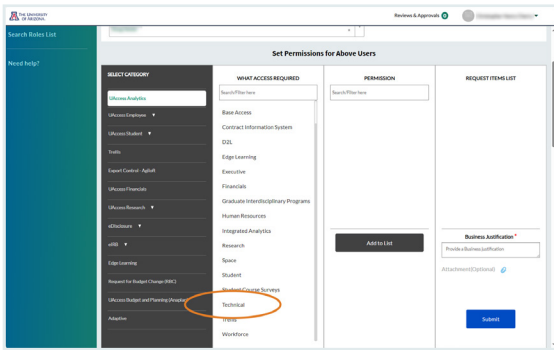
2. Select your user information and choose the APL (Access Provisioning Liaison) for your department as the Approver.



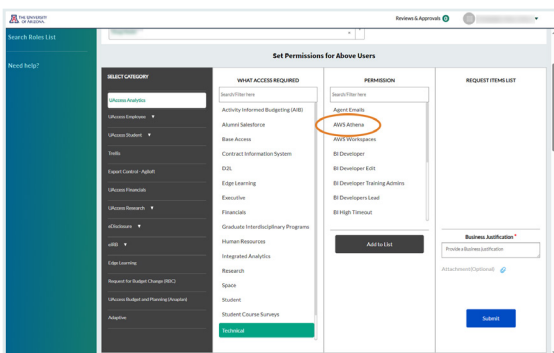
Role approval goes through multiple individuals and typically takes 2-3 business days.



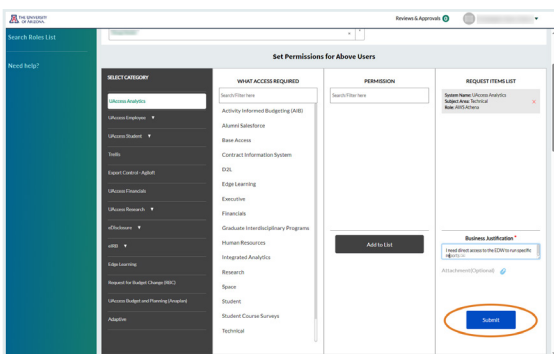
3. Click **UAccess Analytics** under “Select Category”.



4. Click **Technical** under “What Access Required”.



5. Select **AWS Athena** under “Permission” and then click Add To List.

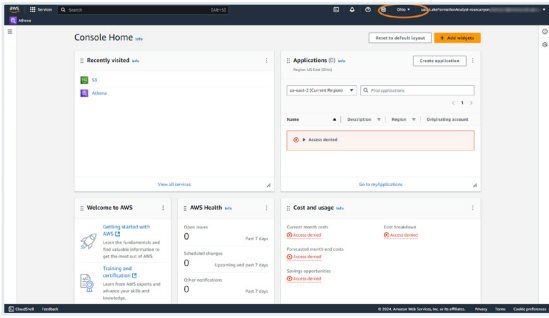


6. Enter your business justification and click **Submit**.

You’ll receive multiple approval emails from AccessFlow. 1-2 business days after your APL has approved your role, you should receive the confirmation email from UAIR stating that your access has been set up.

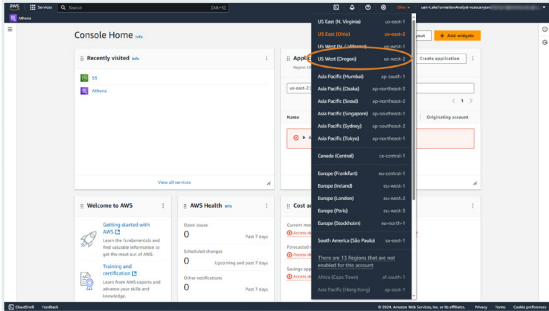
Setting Up Athena

Once your request has been approved, you will receive an email confirmation along with a link to the university’s AWS Console.



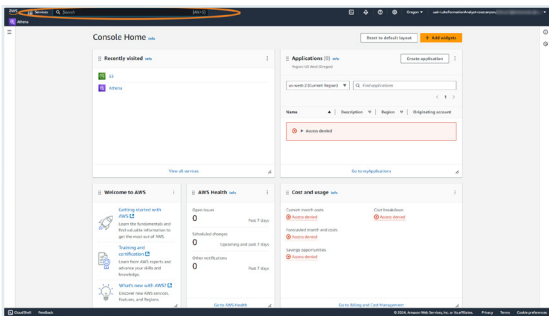
1. When you login to AWS Console, you will see the console home.

First, you'll need to change your server location. Click the **dropdown** that says "Ohio".

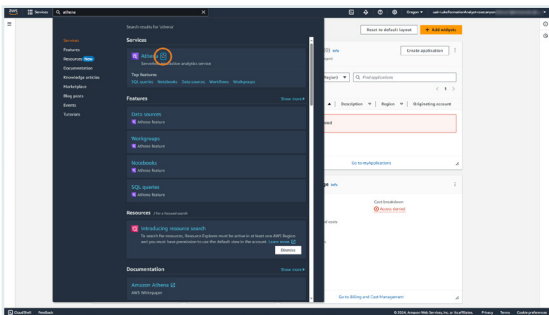


2. Select **us-west-2 / Oregon**.

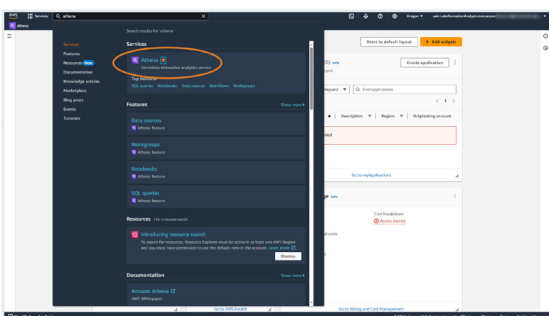
Please make sure to run all queries from the Oregon server location.



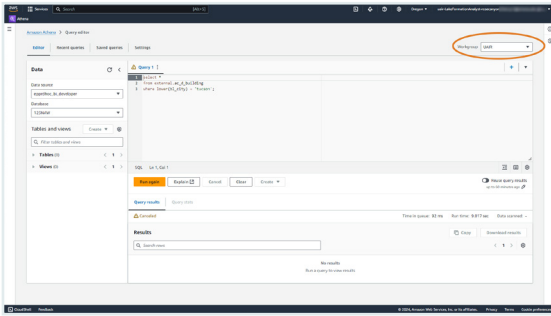
3. Click the search bar at the top and type in "Athena".



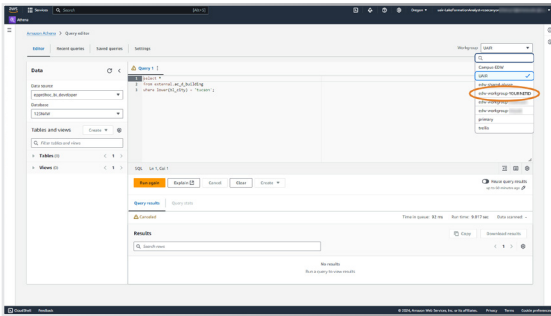
4. Click the star icon to favorite Athena.



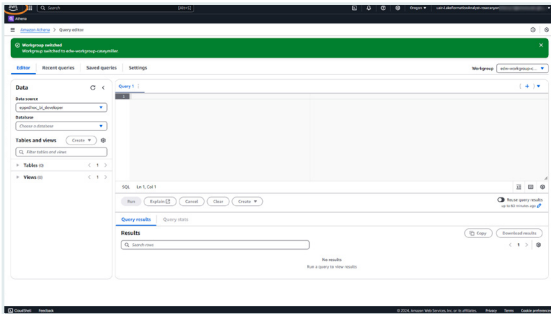
5. Athena has now been added to top bar of the AWS console. Click on **Athena** to open it.



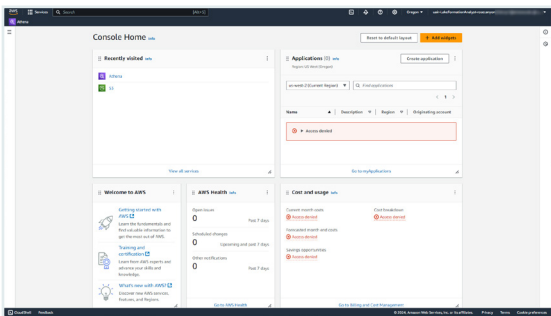
6. Lastly, change the workgroup. Click the dropdown next to “Workgroup”.



7. Click **edw-workgroup-“Your NetID”**.



8. You are now ready to start using Athena. Click the **AWS logo** to return home.



9. Athena will now appear as an option under the “Recently Visited” section and at the top left of the console.

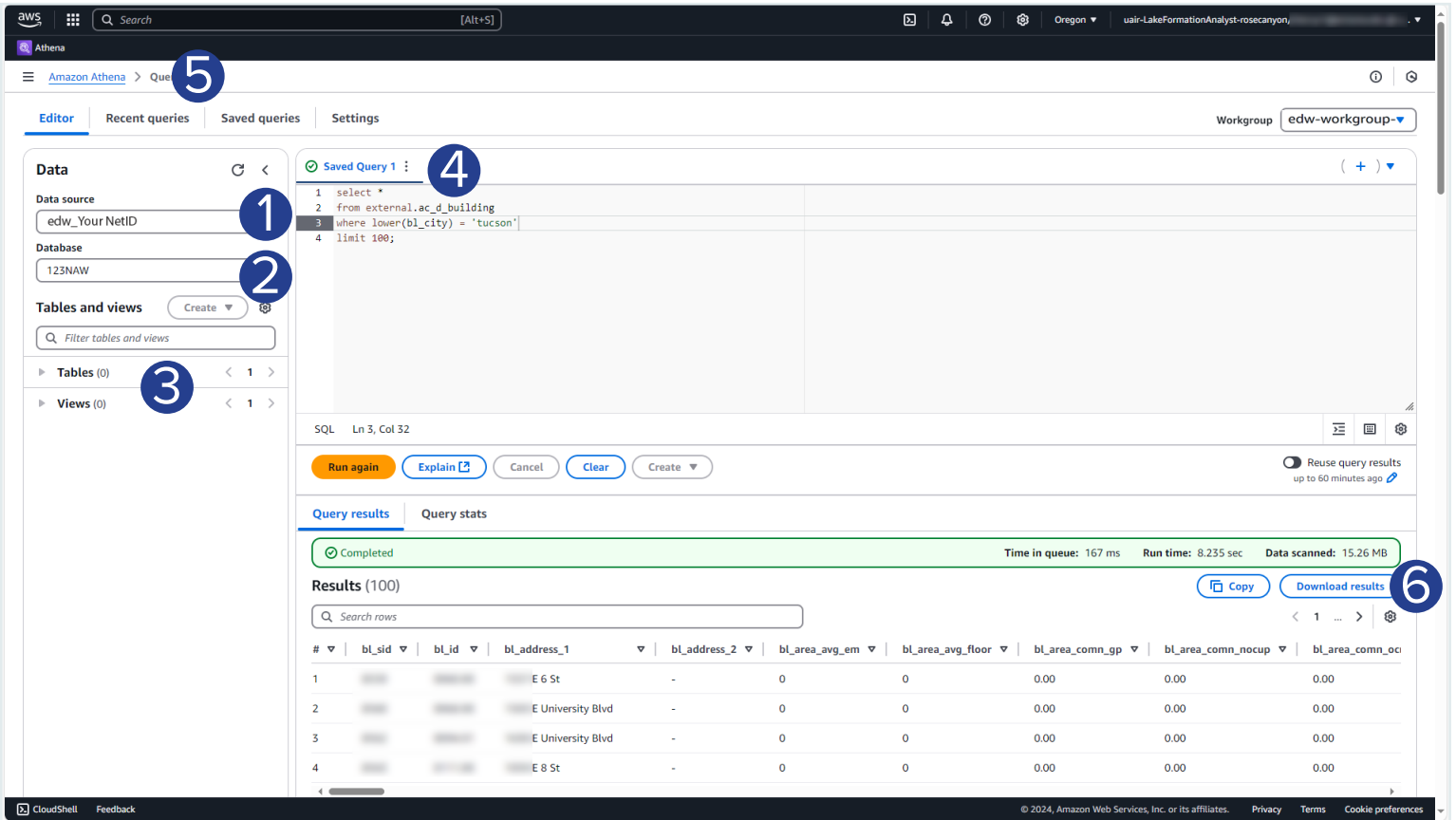
Using Athena

While working in Athena, UAIR recommends limiting SQL results to 50 rows. Athena bills the university based on how much data is returned, so limiting the query helps cut costs. Once you finish tuning your SQL, please feel free to retrieve all the data you need.

SQL: limit 50

Example:

```
select *
from table example
limit 50;
```



1. Data Source

Select “edw_YourNetID”

2. Database

If you want to search for tables to query, click the Database dropdown to find the specific database/schema you’re looking for.

3. Tables and Views

This section allows you to choose the specific tables or views in the database.

4. Query Actions

Use this menu to save queries.

5. Recent Queries and Saved Queries

Use these tabs to view a history of past queries or load queries you’ve saved.

6. Download Results

Export your query results in a .CSV format. All institutional data is governed by the [University Privacy Statement](#), [FERPA](#), and [ISO Governance](#).

Here to Help

Have any questions? Feel free to reach out to the UAIR team.



[UAIR SUPPORT HUB](#)



[EMAIL](#)